

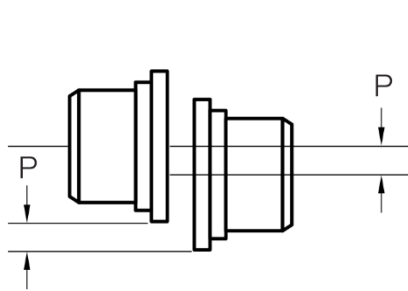
TIRE COUPLINGS

FULLY INTERCHANGEABLE WITH INDUSTRY STANDARD

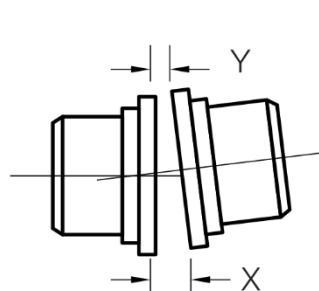
- No lubrication required
- Simple, proven design
- Quick tire replacement without displacing equipment, less-down-time
- Torsionally elastic – excellent shock and vibration absorbing properties
- Electrically isolates driver and driven shafts reducing bearing failure
- Flanges with tapered bushings for ease of installation



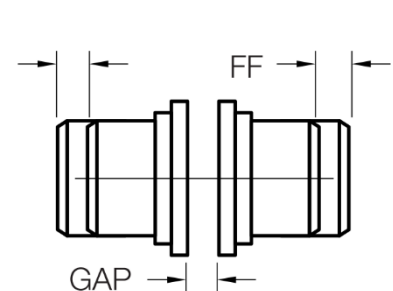
COMPENSATE FOR SHAFT MISALIGNMENT



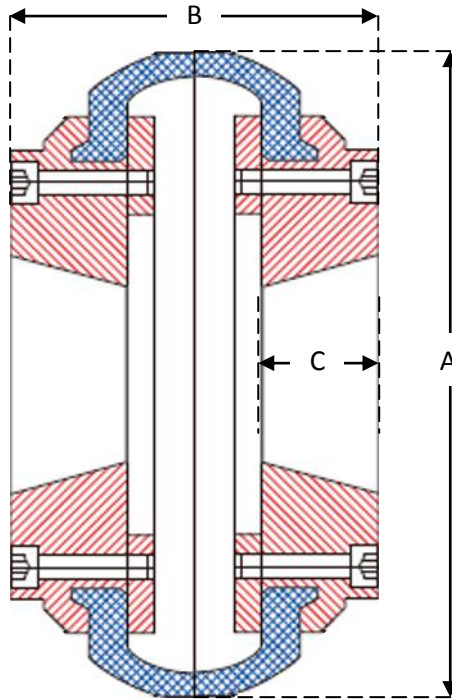
PARALLEL



ANGULAR



AXIAL MOVEMENT



Dimensional Outline

Tire Coupling

Size ¹	Torque Rating (lbs-in)	Max RPM	Bushing Max Bore (in)	Dimensions (in)			Bushings ²	Flange Fastener ³
				A	B	C		
DC40H	221	5,500	1	4.09	2.60	0.87	1008	M5
DC50H	575	4,500	1-1/8	5.25	2.95	0.98	1108	M6
DC60H	1,106	4,000	1-7/16	6.50	3.27	0.98	1310	M6
DC70H	2,213	3,600	1-11/16	7.38	3.00	0.98	1610	M8
DC80H	3,363	3,100	1-1/8	8.38	3.50	1.26	2012	M8
DC90H	4,425	2,800	2-11/16	9.25	4.61	1.77	2517	M10
DC100H	5,930	2,600	2-11/16	10.00	4.61	1.77	2517	M10
DC110H	7,788	2,300	3-1/4	11.00	5.00	2.01	3020	M10
DC120H	11,771	2,100	3-1/4	12.38	5.16	2.01	3020	M12
DC140H	20,621	1,840	3-15/16	14.13	6.38	2.56	3525	M12
DC160H	33,365	1,560	4-7/16	15.83	7.24	3.03	4030	M16
DC180H	55,490	1,500	4-15/16	18.50	-	-	4535	M16
DC200H	82,571	1,300	4-15/16	20.00	-	-	4535	M16

¹ Flanges are Type H, with wide end of the bushing mounted outboard - Type F available

² Flanges are machined for, but less, taper lock bushings

³ Please note: our flanges utilize metric fasteners

Stocking Warehouse Location

19579 Progress Drive - Suite A Strongsville, Ohio 44149

Phone: (440) 234-6200 • Fax: (440) 234-1200 • Email: sales@drivecomponentsllc.com